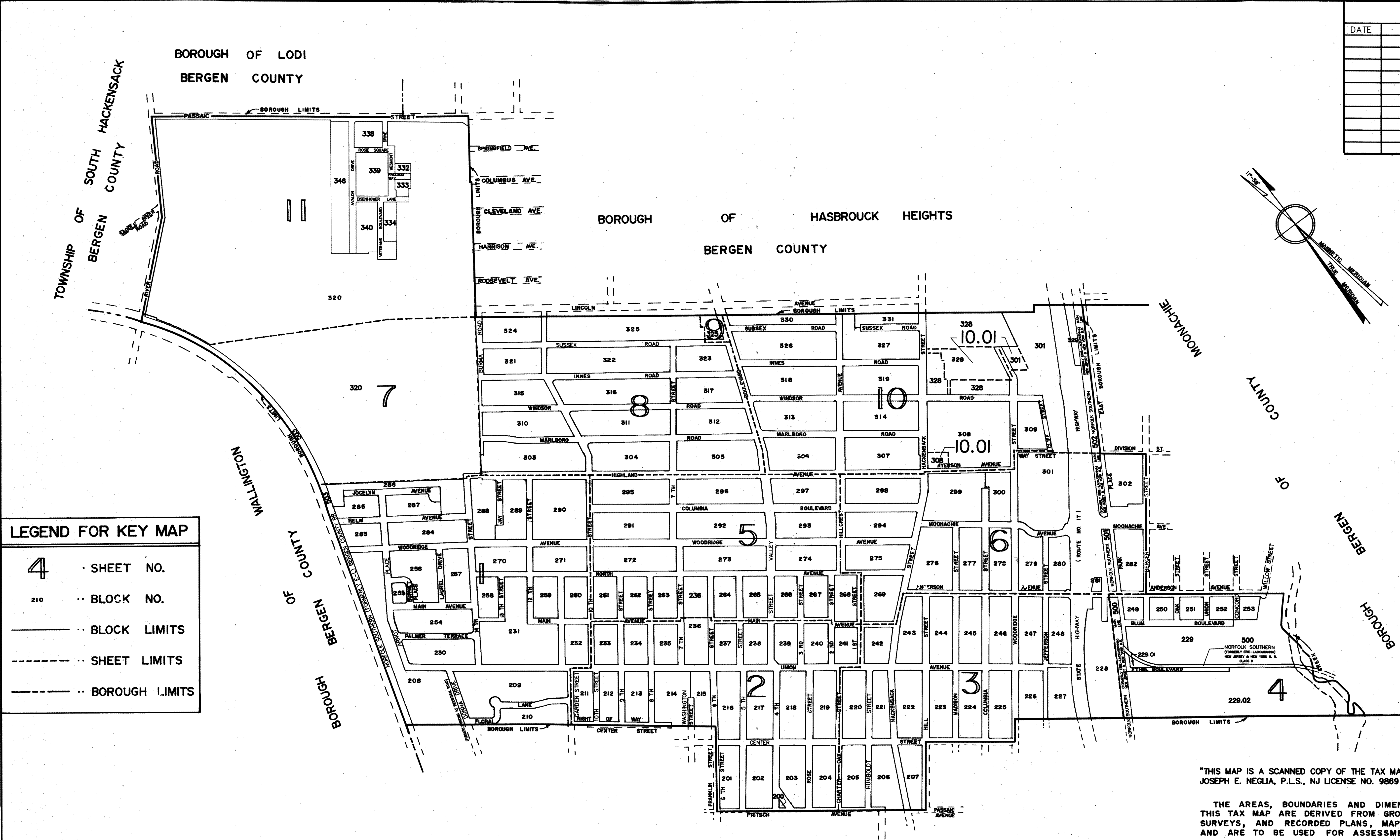
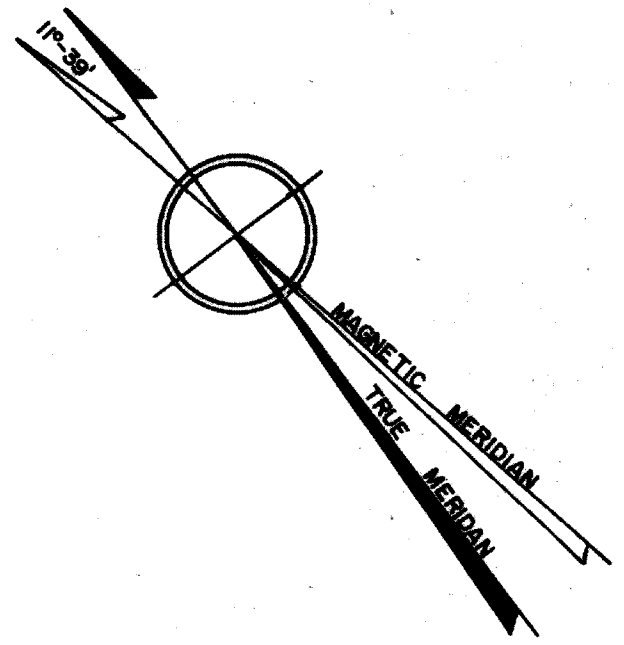


KEY MAP

REVISIONS		
DATE	NAME	NO.



LEGEND FOR KEY MAP	
4	SHEET NO.
210	BLOCK NO.
---	BLOCK LIMITS
---	SHEET LIMITS
---	BOROUGH LIMITS

LEGEND FOR DETAIL SHEETS	
(256)	BLOCK NUMBER
27	LOT NUMBER
[Dashed Box]	STRUCTURES
---	BOROUGH LIMITS
---	LOT LINES
---	BLOCK LIMITS
---	MATCH LINE
---	EASEMENT

"THIS MAP IS A SCANNED COPY OF THE TAX MAP PREPARED BY JOSEPH E. NEGLIA, P.L.S., NJ LICENSE NO. 9869 DATED JUNE 1973."

THE AREAS, BOUNDARIES AND DIMENSIONS SHOWN ON THIS TAX MAP ARE DERIVED FROM GROUND SURVEYS, AERIAL SURVEYS, AND RECORDED PLANS, MAPS, DEEDS, AND WILLS AND ARE TO BE USED FOR ASSESSMENT PURPOSES ONLY.

"THIS TAX MAP SUPERSEDES THE TAX MAP CERTIFIED DECEMBER 17, 1993"

BOROUGH OF BERGEN COUNTY CARLSTADT

"I HEREBY CERTIFY THAT THIS MAP AND ANY REQUIRED SURVEY HAS BEEN REVISED UNDER MY IMMEDIATE SUPERVISION, AND COMPLIES WITH THE LAWS OF THE STATE OF NEW JERSEY."

Michael J. Neglia
MICHAEL J. NEGLIA P.E., P.L.S., P.P. (NJ LIC. NO. 38604)

NEW JERSEY DEPARTMENT OF THE TREASURY
DIVISION OF TAXATION
APPROVED AS A TAX MAP PERMISSIBLE TO THE AUTHORITY OF N.J.S.A. 54:18 AND N.J.S.A. 54:20-1
FOR THE DISTRICTAL DIVISION OF TAXATION
Judith Miller, CPA
Sue D. C. A. Supervising Field Rep
DATE **SEP 29 2018** SERIAL NO. **1047**

TAX MAP
BOROUGH OF WOOD - RIDGE
BERGEN COUNTY NEW JERSEY
SCALE: 1"=400' JUNE 1973
JOSEPH E. NEGLIA -- BOROUGH ENGINEER
TO SHOW CONDITIONS AS OF SEPTEMBER 1, 2013

KEY MAP